

March 2022

ISSN 1675-5464

FYi



Your OSH preferred partner

NIOSH Mobile Training Unit Simulator for Confined Space

Pandemic Versus Endemic

The background of the page is a collage of images related to construction and safety. It shows several workers in hard hats and safety gear standing on a construction site. There are also images of buildings under construction, including one with a corrugated metal roof. The overall color scheme is a mix of blue, green, and yellow, with a textured, artistic feel.

Inovasi Fasilitas Latihan Keselamatan Dan Kesehatan Pekerjaan (KKP)

Executive Director's Note

Assalamualaikum W. B. T.

The actual rate of COVID-19 infection in the country has been falling sharply since the middle of the month of March. Most businesses have resumed while all steps are being taken to ensure a safe working environment for employees, superseding the financial burden. Data records that as high as 70% of Malaysian businesses intend to make COVID-19 vaccinations mandatory for all their employees. Our greatest challenge today would encourage the remaining employees to accelerate the COVID-19 vaccine booster programme. Malaysia has now more than 16 million adults who have received booster doses but the remaining are yet to be persuaded.

OSHA obliges the employer to take all reasonably practicable steps to ensure the safety and health of all employees in the workplace. It is the employer's responsibility to conduct COVID-19 risk assessments to determine what steps should be taken to meet this obligation. As a general rule, an exemption will only be available to employees to opt-out of vaccination due to medical, religious, and or safety reasons so that employers could manage the situation by requesting some medical evidence to support the refusal. When undertaking a COVID-19 risk assessment, employers should consider the risks posed by this pandemic, the measures available to mitigate the risks, the reasonable steps that can be taken to minimize the risks and the repercussions or consequences of taking and or failing to take those reasonable steps. The question of whether the direction from employers to adopt mandatory vaccinations is reasonable will depend on the circumstances of each case, such as the industrial sector, the type of work performed, vulnerability of the workforce, potential exposure to third parties and etc. Some examples of high-risk industries where the implementation of a mandatory vaccination policy might be justified, such as healthcare, hospitality, construction, aviation, educational services and social welfare organizations.

Given the continuous battle with COVID-19 ever since its emergence, vaccination seems to be our only ticket to a return to normalcy. As more employees are assured of returning to a safe work environment, productivity will be heightened and business operations will be ready to reverse the economic impact. Safe entry into the endemic largely depends on our decisions, as I believe we will be less prone to closures and disruptions. I urge the public to lend your support so that, together we envelop a quick recovery!



Haji Ayop Salleh
Executive Director
NIOSH

Editorial Team



March 2022
eISSN 2762-7412



Advisors

Haji Ayop Salleh
Major Haji Hanif Maidin (Rtd)

Editors & Writers

Ts. Hj. Shahronizam Noordin
Saupi Nazri Bin Mamat
Muhamad Syarizat Azmi
Joy Khong Chooi Yee
Haji Muhammad Zaeem Mokhtar

Advertising & Media Sales

Mohd Hussin Abd Salam
Email : dl.bmd@niosh.com.my
Tel : +60 16-559 7399

Publisher

NIOSH
Lot 1, Jalan 15/1, Section 15,
43650 Bandar Baru Bangi,
Selangor Darul Ehsan, Malaysia.
Tel : 03-8769 2100
Fax : 03-8926 2900
Email : general@niosh.com.my
Website : www.niosh.com.my

Table of Contents

Inovasi Fasiliti Latihan Keselamatan dan Kesihatan Pekerjaan (KKP)	3 - 5
NIOSH Mobile Training Unit (MTU) Simulator for Confined Space	6
Pandemic Versus Endemic	7 - 8
Poster-Poster Informasi	9 - 11
Aktiviti-Aktiviti Sepanjang Bulan Mac 2022	12 - 15
Keratan-Keratan Akhbar	16



Please scan this QR code to provide feedback on NIOSH publications

Inovasi Fasiliti Latihan Keselamatan Dan Kesihatan Pekerjaan (KKP)

Disediakan oleh:
Saupi Nazri Bin Mamat
 Pengurus Kanan, Jabatan Pendidikan Dan Latihan & Pejabat Wilayah
 (ETD & RO) NIOSH
 Email : saupi.nazri@niosh.com.my

1. PENDAHULUAN

Sejak ditubuhkan pada tahun 1992, NIOSH telah berkembang seiring dengan perkembangan teknologi dalam bidang latihan KKP. Bagi mencapai visi NIOSH iaitu untuk menjadi pusat kecemerlangan Keselamatan dan Kesihatan Pekerjaan (KKP) di Malaysia, NIOSH perlu berada di hadapan dalam penggunaan teknologi dan peralatan latihan yang terbaik. Oleh itu pihak Pengurusan Jabatan Pendidikan dan Latihan NIOSH dengan sokongan Pengurusan tertinggi telah merangka pelan pembangunan dengan mengambil kira keperluan pembangunan fizikal dan juga perolehan peralatan latihan KKP yang menyeluruh. Pembangunan ini dibuat secara berperingkat mengikut kemampuan dan dana yang ada.

Sumber pembiayaan bagi aktiviti pembangunan fizikal dan peralatan ini diperolehi dari dua sumber iaitu:-

- i.) Peruntukan dalaman (bajet tahunan). NIOSH telah memperuntukan sebahagian dari bajet tahunan untuk membangunkan infrastruktur latihan yang sesuai.
- ii.) Peruntukan dana pembangunan dari Kerajaan. Sebagai sebuah agensi dibawah Kementerian Sumber Manusia, NIOSH telah diberikan bantuan dalam bentuk dana pembangunan (CAPEX). Peruntukan ini disalurkan melalui Rancangan Malaysia (RMK).

2. FASA PEMBANGUNAN / INOVASI FASILITI LATIHAN

a.) Pembangunan Fizikal / Infrastruktur Latihan

- i.) Pembinaan kampus tetap di Bandar Baru Bangi yang berkeluasan 10 ekar ini telah disiapkan pada tahun 1996 dengan kos RM9.7 juta. Ibu pejabat NIOSH telah berpindah dari Pusat Bandar Damansara dan beroperasi sepenuhnya di kampus baru ini pada tahun 1996. Kemudahan yang lengkap dengan bilik latihan, dewan teater, makmal, cafeteria dan bilik penginapan peserta.



Gambar Ibu Pejabat NIOSH di Bandar Baru Bangi semasa pembinaan.



- ii.) Pembinaan kampus tetap di Wilayah Selatan di Senai, Johor. Projek ini dilaksanakan dalam dua fasa dan siap sepenuhnya pada tahun 2001. Ianya

melibatkan kos pembinaan sebanyak RM20.8 juta untuk fasa 1 dan 38.2 juta untuk fasa 2. Kampus yang lengkap dengan fasiliti latihan seperti dewan kuliah, bilik latihan kecil dan besar, ruang kafeteria, bilik pensyarah, surau dan 72 unit bilik hostel (Fasa 2).



Gambar kampus Senai terkini

- iii.) Pembinaan Simulator Latihan Ruang Terkurung di bangunan utama ibu pejabat Bandar Baru Bangi. Pembinaan simulator latihan ini bertujuan untuk menyediakan ruang bagi aktiviti latihan amali / praktikal bagi program ruang terkurung (*confined space*). Ianya dibangunkan mengikut spesifikasi industri bagi aktiviti dalam ruangan terkurung (1 unit silo dan 1 unit tangki). Kos pembinaan yg bernilai RM435 ribu ini dibiayai melalui peruntukan RMK10.



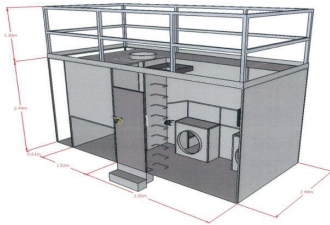
Gambar simulator latihan ruang terkurung

- iv.) Pembinaan kampus tetap di Wilayah Pantai Timur di Kerteh, Terengganu yang berkeluasan 20 ekar dengan kos sebanyak RM46.5 juta dibiayai melalui peruntukan RMK. Pembangunan kampus ini merangkumi fasiliti latihan seperti bilik kuliah, dewan kuliah, surau, kafeteria dan kawasan latihan terbuka. Pembangunan kampus Kerteh diteruskan ke Fasa 2 melalui peruntukan RMK12 yang merangkumi pembinaan fasiliti latihan untuk 4 zon latihan khusus. Fasa 2 ini dijangkakan siap sepenuhnya pada tahun 2024.
- v.) Pembinaan bangunan tambahan iaitu Menara NIOSH di ibu pejabat. Menara setinggi 9 tingkat ini menempatkan sebanyak 21 bilik latihan, Dewan serbaguna, dewan teater, ruang kafeteria, pusat sumber, ruangan pejabat dan makmal komputer. Pembinaan bangunan tambahan ini dibiayai melalui peruntukan dana RMK dengan kos sebanyak RM45 juta.



Gambar Kampus NIOSH Wilayah Pantai Timur (Kerteh)

vi.) Pembinaan Simulator Latihan Amali untuk program ruang terkurung di semua pejabat cawangan di seluruh Malaysia. Pembinaan simulator latihan ini adalah untuk memenuhi syarat pendaftaran sebagai pusat penyedia latihan bagi program ruang terkurung. Ianya direka bentuk selari dengan garis panduan yang ditetapkan oleh JKKP dan juga mempunyai ciri-ciri kompak serta mudah alih. Kos pembangunan sebanyak RM3.2 juta melalui peruntukan dalaman dan RMK.



Gambar Simulator Pejabat Cawangan

vii.) Pembinaan 2 unit Hangar Latihan Terbuka di ibu pejabat dan di kampus Wilayah Selatan (Senai). Hangar ini dibangunkan melalui peruntukan dalaman NIOSH dengan kos RM2.2 juta. Fungsi utama hangar ini adalah sebagai ruang untuk menjalankan latihan amali bagi program 'Bekerja di Tempat Tinggi' (WAH), Pengendalian Truk Ansun (*Forklift*), Amali Latihan Bekerja di Ruang Terkurung (*Confined Space*) dan sebagai ruang pelbagai guna.



Gambar Rekabentuk Hangar SRO dan Ibu Pejabat, NIOSH

b.) Pembangunan Fasiliti Latihan / Peralatan Latihan KKP

Pembangunan infrastruktur latihan tidak lengkap tanpa peralatan / fasiliti latihan yang bersesuaian. NIOSH telah mengenalpasti keperluan peralatan latihan ini seiring dengan perkembangan infrastruktur latihan yang disediakan. Dalam perancangan pembangunan, kesemua elemen latihan telah dikenalpasti iaitu pembangunan modul, kaedah penilaian, pembangunan jurulatih, keperluan fasiliti dan peralatan latihan.

Antara inovasi peralatan latihan yang telah NIOSH laksanakan ialah:-

- i.) Peralatan Latihan Ruang Terkurung (*Confined Space Equipment*)
- ii.) Peralatan Latihan Bekerja di Tempat Tinggi (*Working at Height*)
- iii.) Peralatan Latihan Higen
- iv.) Peralatan Latihan / Pengujian Bunyi Bising
- v.) Peralatan Latihan Kualiti Udara Dalaman (IAQ)
- vi.) Peralatan Latihan Bergerak (Mobile Training Unit)

Unit Latihan Bergerak ataupun MTU telah melalui beberapa fasa inovasi. Ianya berkembang daripada unit yang ditarik oleh kenderaan 4WD kepada lori yang dikendalikan oleh seorang petugas. Perubahan spesifikasi dan rekabentuk ini dibuat oleh kakitangan NIOSH yang terlibat secara langsung dengan pelaksanaan program latihan untuk ruang terkurung. Hasil dari pemerhatian serta maklumbalas dari industri pasukan pereka telah mengambil kira penambahbaikan dan dimasukkan dalam spesifikasi yang baru. Setiap rekabentuk dipastikan mematuhi garis panduan yang ditetapkan oleh pihak Jabatan Keselamatan dan Kesihatan Pekerjaan (JKKP), dan apabila siap, setiap unit tersebut perlu melalui proses pemeriksaan rapi oleh pegawai JKKP sebelum diluluskan untuk penggunaan.

Berikut adalah inovasi dalam rekabentuk MTU:-

Model	Tahun Dikeluarkan	Bil Unit	Kelebihan / Inovasi
MTU 1.0	2010	2 UNIT	- Unit simulator bergerak - kompak & ditarik oleh 4WD
MTU 2.0	2016	5 UNIT	- Unit lori 8 tan - reka bentuk mengikut spesifikasi penuh - lebih besar dan lengkap
MTU 3.0	2019	2 UNIT	- Unit lori 3 tan - reka bentuk kompak - lebih kecil dan mudah dikendalikan
MTU 3.1	2022	6 UNIT	- Unit lori 3 tan - reka bentuk kompak ditambah baik dari rekabentuk 3.0 - lebih kecil & mudah dikendalikan



MTU 1.0 (Tahun 2010)



MTU 2.0 (Tahun 2016)



MTU 3.0 (Tahun 2019)



MTU 3.1 (Tahun 2022)

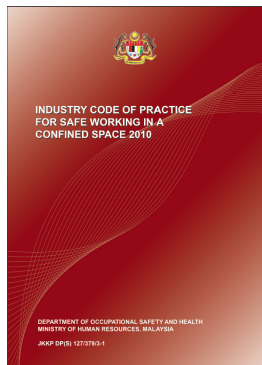
3. KESIMPULAN

NIOSH akan sentiasa berinovasi seiring dengan perubahan dan perkembangan dalam industri. Matlamat kami supaya setiap peserta yang mengikuti program latihan KKP di NIOSH dapat merasai pengalaman pembelajaran yang terbaik dengan penggunaan peralatan yang sesuai dan terkini.

NIOSH Mobile Training Unit (MTU) Simulator for Confined Space

Article written by:
Haji Muhammad Zaeem Mokhtar
 Technical Expert III
 Education and Training Department and Regional Offices
 Email: zaeem@niosh.com.my

Since the first major confined space incident in Malaysia which happened in June 2001, NIOSH Malaysia has set up a task force to ensure the safety and health of all who are involved in confined space entry. In October 2001, the Department of Occupational Safety and Health (DOSH), Ministry of Human Resources, Malaysia issued the Code of Practice for Safe Working in a Confined Space which NIOSH Malaysia was amongst the working group of the publication. Since then, NIOSH Malaysia has come out with a series of training with regards to Confined Space Safety which are Authorised Entrant and Standby Person (AESP), Authorised Gas Tester and Entry Supervisor (AGTES), Confined Space Rescue (CSR), Inert Entry Training (IET) and Confined Space Trainers' (CST) Program.



There have been requests by the industry for the programs to be conducted in their premises and like in previous years, the industry has to provide a safe area to conduct the practical entry session. To meet the training requirement, an actual confined space such as a storage tank has to be made safe before every session.

In 2010, alongside DOSH's latest publication of the Industry Code of Practice (ICOP) for Safe Working in a Confined Space, NIOSH Malaysia again embarked on a new Mobile Training Unit (MTU) Simulator for Confined Space Program to further promote safe entry into confined spaces. The first two units have been used in a wide range of sessions for all industries including DOSH confined space training series through Peninsular Malaysia.



Then, again in the year 2015, NIOSH Malaysia has upgraded the MTU with smoke machines and internal CCTV. By this time, NIOSH Malaysia has produced 5 MTUs on a 7 tonne bonded lorry throughout Malaysia, 2 units in Peninsular Malaysia, 1 unit in Sabah and 2 units in Sarawak. This is in accordance following the demand for NIOSH Malaysia's confined space programs requested from industries is still high.

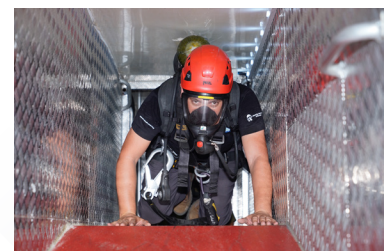


In 2019, NIOSH Malaysia has remodelled the MTU into a lighter version where it is mounted on a 3 tonne lorry and in 2022, NIOSH Malaysia has produced 9 units across the nation. Still maintaining the requirement for vertical and horizontal entry, NIOSH Malaysia has also included a short maze to simulate the actual entry into a confined space. The MTU provides the simulation of the isolation procedure where the participants are required to perform a Log Out Tag Out (LOTO) procedure before entry. For vertical entry, a tripod and winch with a retractable lifeline are to be mounted and attached to the workers for entering and exiting and also to simulate rescue procedures.



Entry with a self-contained breathing apparatus (SCBA) or an airline system or even an inert entry breathing apparatus is possible as the manholes are wide for such entry. Many simulation can be conducted inside the MTU, such as rescue operation, inspection and others.

With such devotion and charisma, NIOSH Malaysia shall strive to ensure and uphold safe entry into confined space for all workers.



PANDEMIC VERSUS ENDEMIC

Article written by:
Khong Chooi Yee, Joy
 Information Dissemination Division (IDD)
 Email: joy.khong@niosh.com.my; joy.niosh@gmail.com

With COVID-19 Coronavirus, Uncertainty Is a Certainty

We have entered the third month of 2022 and the COVID-19 pandemic has made a difference, as we all know. Time has passed, we have seen infection rates begin to slow down in the country, and nothing could be better than rejoicing the appearance of early signs of recovery. Malaysia is no longer facing an unprecedented period of uncertainty over COVID-19. Although some of us are still omitting to return to some semblance of normalcy and doubt the navigation of a life lived not to but alongside the disease. As we move forward, worries, doubts, and uncertainties about the invasion of the new variants seem unsettling but are normal. Last year, the Malaysian government has proclaimed that a zero-COVID strategy was not viable and would have a detrimental effect on the country hence people are now more receptive to the revamping. Being more tolerant of uncertainty succour and convincing the people to accept that we have to live with COVID-19 longer.

Pandemic versus Endemic

The country has now gradually embraced the uncertainties and is poised to move into the endemic phase, but the exact date will soon be announced by the COVID-19 special Pandemic Management Committee chaired by the Prime Minister. When we talk about the transition from pandemic to endemic, we all know too little about COVID-19 or the new variant and many predictors remain unknown. On that account, there is a greater need for researchers and experts to continue to expedite not only to COVID-19 but also the new Variants of Concern (VOC) that appears. Before we can discuss the transition to phases, we need to make a clear distinction between a pandemic and an endemic phase. As defined by the Centers of Disease Control and Prevention (CDC), a pandemic refers to an epidemic that has spread over several countries or continents, usually affecting a large number of people while "Epidemic" means an increase, often sudden, in the number of cases of a disease above what is normally expected in that population in that area. For an infectious disease to be classed in the endemic phase, the rate of infections has to more or less stabilized over the years. For a country to enter an endemic phase, a baseline number of COVID-19 cases must be achieved within the country, accompanied by occasionally unpredictable outbreaks.

Malaysian Experience and Resilient Recovery

Malaysia was successful in establishing a baseline for transition and began treating COVID-19 as an endemic disease. Reducing the virus's reproductive number down to one is just "the bare minimum" to classify the endemic disease, there are other factors that we need to outline because the assessment of these latent factors will be a more challenging concern. It is hard to spell out the appropriate benchmark for the transition to be taken over, but there is certainly more to be done before preparing for the transition. Malaysia is weathering the pandemic as the undertaken vaccination program is recognized as one of the highest in the world and the Ministry of Health (MOH) has begun since last year delivering a COVID-19 booster vaccine to the frontliners, healthcare professionals, and the elderly with comorbidities to ensure optimal protection. As for the national security level, Defence Minister Datuk Seri Hishammuddin Hussein pledged that the country is ready to reopen safely as all seven criteria are now met. As reported the criteria sets include a standard operating procedure with nine guidelines; a

Heightened Alert System - HAS; National Testing Strategy; and TRIIS (Test, Report, Isolate, Inform, Seek). These criteria also require having an automated 'Find, Test, Trace, Isolate, Support' (FTTIS) system, and the gradual reopening of national borders, as well as community empowerment ambassadors.

Although Malaysia has paused the transition to the COVID-19 endemic stage after the country's first Omicron variant was detected last November, the government appears to have sharpened its emergency response strategies and showing a confident and quiet determination to continue recovery efforts rather than shut down economies. The MOH has not known enough over the mutation of the COVID-19 disease, Health Minister Khairy Jamaluddin and Director-General of Health Tan Sri Dr. Noor Hisham Abdullah assured of current regulations and strict adherence to COVID-19 SOPs are sufficient to deal with variants of concern, including Omicron.

Pandemic to endemic and the challenges ahead

The Malaysian government says that recognizing COVID-19 as endemic is not defeat, but adaptation. The reopening of the country's economy is also one of the key aspects of the transition to the epidemic phase, where economic performance is expected to recover in the second half of 2022 and by the following year. After battling with COVID-19 for more than two years, the nation now understands much more about the disease learning through the importance of compliance with SOPs. The country has changed the game with solid evidence through herd immunity and now with a much lower daily infection and mortality rate. Besides booster deployment, the enforcement of the "Search, Test, Isolate, Treat and Quarantine" (STITQ) application and many other recovery plans and preparations are carried out in parallel. As the country continues to adapt and making adjusting to the endemic phase, what we shall not neglect is the economic recovery and sustainable development that underpin the reopening of all sectors. Early on this month, our Prime Minister Datuk Seri Ismail Sabri Yaakob announced Malaysia to reopen borders on April 1, 2022. He stated that the decision to be made will be based on the latest scientific evidence and facts related to COVID-19, and comparing the requirements for the reopening of borders by other countries.

The pandemic has paralyzed the national economy over the past two years, but now the workforce and industry have returned to business under the new norms. To coexist with the virus, much of the workforce is now a key part of the discipline on SOPs, such as mask-wearing, physical distancing, and acceptance of safe and effective vaccines. For smaller businesses that have been negatively affected by COVID-19, a further relaxation is crucial, so that domestic consumption can be spared, leading to higher business volume. In addition to SOPs compliance, industry players should focus on re-skilling, up-skilling, and attracting more investment to increase productivity and competitiveness, especially when there is a labor shortage specifically for skills and admission of foreign workers. The country has 1.5 million up-to-date job vacancies, but the number of unemployed stands at 748,000, reflecting ineffectiveness in sustaining market demand. Under Malaysia's 12th plan, the country's economy is expected to grow between 4.5% and 5.5% over the next five years, there is a need to strengthen and increase investor confidence levels to support domestic and foreign investments in expanding the economy. In terms of increasing production capacity, industry players should take the opportunity to reform

and inculcate knowledge and skills in occupational health and safety and prepare for future challenges. There is a strong need to train and cultivate as many workers as possible and equipped with a minimum understanding of occupational safety and health discipline with the fundamentals of exposure to occupational diseases, risk assessment, and the types of preventive measures applicable to industries and feasible for a specific type of business. The more employees are embedded with occupational safety and health (OSH) knowledge, the stronger the protective shield we have built for industry players. Contemporaneously, it also protects everyone to prevail over negligence. On the one hand, it could be beneficial by creating more employment opportunities and protecting the safety and health of workers, concurrently it also serves as an investment to safeguard against future emergence.

Industry players should understand that infection prevention and control will differ nationally and across professions. The preventive measures are also likely to be task-specific based on the risk assessment. Some measures can be applied to reduce the risk of infection for a particular industry, while other occupations may require advanced applications. These include, for example, the implementation of workplace hygiene measures, the implementation of additional effective measures such as medical surveillance and monitoring, risk assessment aimed at minimizing as far as possible the number of workers exposed or potentially exposed; thus workers can further improve the workplace environment. Early detection alerts can provide valuable early warning of emerging infections. This could lead to improvements in preparedness not only for public health but also to reduce other health hazards in the workplace.

Reopening the Country

Although COVID-19 is a global pandemic, the expression of the pandemic may differ from country to country. These may include the genetics of the virus, the characteristics of the vulnerable population, the behaviour of the population, and the country's response to the crisis. Hence we witness the country's challenges

and the response to the pandemic to endemic transition in the hope of sharing our experiences which can be lessons learned from others. Malaysia, as a developing country with limited resources, faces mounting challenges in responding to the crisis, especially during the new variants invasions. However, we are thankful for good cooperation between government agencies and the public, the most important leaders that successfully lead the country to overcome the first two waves of the pandemic. Nevertheless, the third waves' has proven to be more daunting, but the government and authorities have imposed various exit strategies and coped with an acute awareness of the interval changes. We foresight Malaysia will be able to keep the pandemic at bay and together we secure and lift the pandemic, moving towards endemic before the holy month of Ramadan has arrived.

The country's Strategic Moves for Endemic

1. Develop more medical technologies as the country heads towards the endemic phase of Covid-19.
2. Invite prominent vaccine companies from neighbouring countries to set up their production plants in Malaysia which include, data research and Research and Development Centers.
3. Simplify and refine the Standard Operating Procedure for all industries so that they are better understood and followed, particularly by foreign workers.
4. Ensuring the success of the National COVID-19 Immunisation Programme (PICK) and Malaysia's coronavirus booster inoculation program.
5. Malaysia has imposed a temporary entry ban on foreigners from several southern African countries without permanent resident (PR) status or working visas.
6. Subsidize the cost of RTK Antigen Test, polymerase chain reaction test, and treatment for high-risk workers.

PANDEMIC

Three threshold indicators

The Malaysian government will use National Recovery Plan (NRP) four phases to assist Malaysia in exiting the pandemic. The transition from one phase to the next phase will be based on three threshold indicators:

1. The state of COVID-19 transmission in the community based on the number of daily cases of infection;
2. The capacity of the public health system based on the rate of ICU wards occupancy;
3. The percentage of the population covered with two doses of vaccine injection.

VERSUS

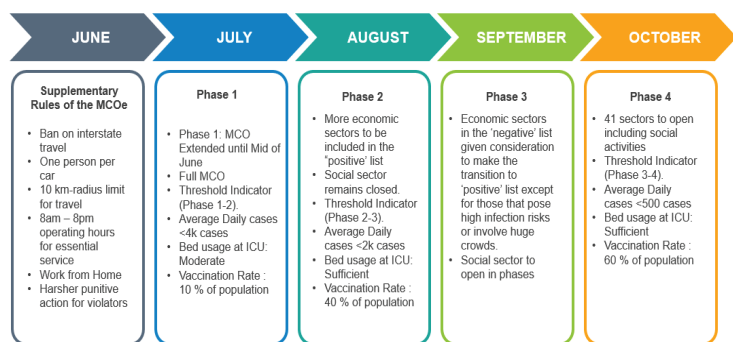
The pandemic ends when the virus is no longer prevalent when

- A vaccine or an effective treatment is developed – this would be the most desirable option. Think of polio – an epidemic, not a pandemic – which came to a medical end with a vaccine.
- Infection and death rates plummet – also considered a medical end. That's how the Spanish flu pandemic of 1918 ended – those infected either died or developed immunity.
- People simply get tired of living in fear, and learn to live in a world with the disease. This is considered a social ending, which is not an actual end since the disease itself doesn't go away. In this situation, the disease may continue to spread, which can delay the medical end.

ENDEMIC

Seven criteria for endemic phase entry

1. Having one SOP with nine guidelines;
2. Utilize Heightened Alert System – HAS;
3. National Testing Strategy;
4. TRIIS (Test, Report, Isolate, Inform, Seek);
5. An automated Find, Test, Trace, Isolate, Support (FTTIS) system;
6. The gradual reopening of national borders; and
7. Community empowerment ambassadors.



WHO announced SIX Conditions a country must acquire before lifting a lockdown.

These conditions provide justifications for a country to decide to lift restrictions on their social and economic activities:

1. Disease transmission is controlled.
2. Health system capacities are in place to detect, test, isolate, and treat every case and trace every contact.
3. Outbreak risks are minimized in special settings like health facilities and nursing homes.
4. Schools, workplaces, and other essential places have established preventive measures.
5. The risk of importing new cases can be managed.
6. Communities are fully educated, engaged, and empowered to live under a new normal.



In facing the current economic crisis amid the COVID-19 pandemic, the Malaysian government adopted a strategy that includes SIX Approach-

1. A firm action and resolve in controlling the spread of the COVID-19 pandemic by implementing public movement control.
2. Build an economic resilience through a stimulus package known as PRIHATIN to improve people's economy.
3. Regenerate or restart the economy on a structured and controlled basis.
4. Implement economic recovery strategies in facing the new normal.
5. Strengthen or revitalize the economy for future sustainability.
6. Restructure or reform the economic foundation to allow the country and its people to migrate into an era of living with the new normal.

JOM IKLAN !!!

Tingkatkan jualan produk & perniagaan anda melalui Ruang Iklan di FYI NIOSH

PAKEJ RUANG IKLAN			
Jenis Iklan	1 Bulan	6 Bulan	12 Bulan
Muka Surat 2 (Dalam) - Muka penuh - 21cm X 29.5cm	RM 1,000	RM 5,000	RM 10,000
Muka Akhir (Dalam) - Muka penuh - 21cm X 29.5cm	RM 800	RM 4,000	RM 8,400
1 Muka Penub (Dalam) - 21cm X 29.5cm	RM 700	RM 3,500	RM 7,350
1/2 Muka - 21cm X 14.5cm	RM 600	RM 3,000	RM 6,300
1/4 Muka - 10.5cm X 14.5cm	RM 500	RM 2,500	RM 5,250

*Harga pakej tidak termasuk 6% SST

Terma & Syarat :

- Semua pengiklan hendaklah menyediakan artwork.
- Pengiklan hendaklah memberi design artwork iklan sekurang-kurangnya satu bulan sebelum tarikh penerbitan.
- Bayaran hendaklah dibayar kepada akaun NIOSH beserta design artwork.
- Pengiklan perlu memohon melalui emel di fyi@niosh.com.my
- Sekiranya pemohonan dituluskan, pihak NIOSH akan menghubungi pengiklan.

INILAH MASANYA
UNTUK ANDA
IKLANKAN
PERNIAGAAN ANDA

FYI NIOSH diedarkan dalam bentuk softcopy kepada ahli NIOSH, rakan strategik sektor awam dan swasta, dan juga pelanggan.

RAMADAN 1443H

- IHYA RAMADAN NIOSH 2022 -

Accelerating Sustainability

Food Safety Management Systems

ISO 22000 : 2018

Awareness Course

31 MAY 2022 | 9AM - 5PM

RM 371
COURSE FEE

REMOTE ONLINE TRAINING

For Course Registration SCANME

FLEX Focus Learning Education Experience

Contact us now:

019.275.6535 (Ms. Erin)

013.890.2530 (Ms Wana)

✉ mst@nioshcert.com.my

Visit www.nioshcert.com.my to find out more

Follow NIOSHCertification

Selamat Memperingati

Israak & Mikraj

27 Rejab 1443H | 1 Mac 2022

Daripada seluruh warga kerja
National Institute of Occupational Safety and Health (NIOSH)
Institut Keselamatan dan Kesihatan Pekerjaan Negara

nioshmalaysia
 @NioshMalaysia
 www.niosh.com.my

Wanita

Selamat Hari Sedunia

8 Mac 2022

Daripada seluruh warga kerja
National Institute of Occupational Safety and Health (NIOSH)
Institut Keselamatan dan Kesihatan Pekerjaan Negara

"Saksama Bersama"

nioshmalaysia
 @NioshMalaysia
 www.niosh.com.my

SELAMAT MENYAMBU

HARI POLIS

KE 215

Daripada seluruh warga kerja
National Institute of Occupational Safety and Health (NIOSH)
Institut Keselamatan dan Kesihatan Pekerjaan Negara

nioshmalaysia
 @NioshMalaysia
 www.niosh.com.my

Tawaran khas
untuk warga
Sabah dan Sarawak

TAWARAN

SEBAGAI PENILAI PEPERIKSAAN PENGUJI GAS BERTALIAH DAN PENYELIA KEMASUKAN BAGI RUANG TERKURUNG (AGTES)

Kriteria

- 1) Kelulusan akademik minimum diploma dalam bidang kejuruteraan ATAU sains dengan 8 tahun pengalaman dalam ruang terkurung; ATAU
- 2) Kelulusan akademik ijazah dalam bidang kejuruteraan ATAU sains dengan 5 tahun pengalaman dalam ruang terkurung; DAN
- 3) Telah menghadiri kursus dan lulus peperiksaan Confined Space Trainer (CST); DAN
- 4) Mempunyai sijil pendaftaran AGT/ES yang sah laku; DAN
- 5) Telah diluluskan oleh JKPP sebagai Tenaga Pengajar Program Ruang Terkurung; DAN
- 6) Mempunyai pengalaman mengajar kursus AGTES / AGTES-R sekurang-kurangnya 26 jam dalam tempoh 1 tahun di mana-mana pusat pengajar yang diluluskan oleh pihak JKPP.

NOTA : Setiap permohonan akan dinilai oleh Jawatankuasa Kompetensi Ruang Terkurung dan LPKKKP. Pelantikan adalah tertakluk kepada kelulusan.

Surat permohonan perlulah dialamatkan mengikut alamat seperti tertera dibawah dan boleh dihantar melalui emel ke exam@niosh.com.my atau secara serahan tangan / pos :

Sekretariat
Jawatankuasa Kompetensi Ruang Terkurung
d/la Bahagian Peperiksaan dan Persijilan
National Institute of Occupational Safety and Health (NIOSH)
Lot 1, Jalan 15/1, Seksyen 15
43650 Bandar Baru Bangi
Selangor Darul Ehsan

Tel : 03-89113800
WhatsApp: 019-6668599

SCAN ME

www.niosh.com.my

Tawaran khas
untuk warga
Sabah dan Sarawak

TAWARAN

SEBAGAI TENAGA PENGAJAR BAGI PROGRAM RUANG TERKURUNG

Kriteria

- i) warganegara Malaysia
- ii) Minimum 2 tahun pengalaman mengajar dalam bidang OSH DAN

Mempunyai sekurang-kurangnya diploma dalam kejuruteraan atau bidang berkaitan dengan modul pembelajaran

- iii) Telah menghadiri kursus 'Train The Trainer' (TTT) anjuran NIOSH atau program yang setara diiktiraf oleh Pembangunan Sumber Manusia Berhad (PSMB) dengan jayanya
- iv) Telah menghadiri kursus 'Confined Space Trainer'(CST)
- v) Minimum 3 tahun pengalaman kerja sebagai Penyelia Kemasukan yang berdaftar dengan JKPP
- vi) Minimum 3 tahun pengalaman kerja sebagai Penguji Gas Bertaliah yang berdaftar dengan JKPP

Permohonan beserta dokumen boleh dihantar melalui emel ke niosh.trainers@gmail.com sebelum atau pada 31 Ogos

SCAN ME

www.niosh.com.my

Tawaran khas
untuk warga
Sabah dan Sarawak

TAWARAN

SEBAGAI PENILAI PEPERIKSAAN PENYELIA KESELAMATAN TAPAK BINA (SSS)

Kriteria

- 1) Kelulusan akademik minimum Diploma DAN
- 2) Mempunyai sekurang - kurangnya 5 tahun pengalaman dalam industri pembinaan DAN
- 3) Mempunyai pengalaman mengajar 3 tahun DAN
- 4) Bukti pengalaman mengajar DAN
- 5) Perlu mahir dalam Bahasa Malaysia dan Bahasa Inggeris

NOTA : Setiap permohonan akan dinilai oleh Jawatankuasa Kompetensi Penyelia Keselamatan Tapak Bina dan LPKKKP. Pelantikan adalah tertakluk kepada kelulusan.

Surat permohonan perlulah dialamatkan mengikut alamat seperti tertera dibawah dan boleh dihantar melalui emel ke exam@niosh.com.my atau secara serahan tangan / pos :

Sekretariat
Jawatankuasa Kompetensi Penyelia Keselamatan Tapak Bina
d/la Bahagian Peperiksaan dan Persijilan
National Institute of Occupational Safety and Health (NIOSH)
Lot 1, Jalan 15/1, Seksyen 15
43650 Bandar Baru Bangi
Selangor Darul Ehsan

Tel : 03-89113800
WhatsApp: 019-6668599

SCAN ME

www.niosh.com.my

Tawaran khas
untuk warga
Sabah dan Sarawak

TAWARAN

SEBAGAI TENAGA PENGAJAR BAGI KURSUS PENYELIA KESELAMATAN TAPAK BINA (SSS)

Kriteria

- i) warganegara Malaysia
- ii) mempunyai sekurang-kurangnya 5 tahun pengalaman sebagai pegawai keselamatan dan kesihatan di sektor pembinaan ATAU

mempunyai sekurang-kurangnya diploma dalam kejuruteraan atau bidang berkaitan dengan modul pembelajaran DAN

mempunyai pengalaman bekerja sekurang-kurangnya 10 tahun dalam bidang keselamatan dan kesihatan di sektor pembinaan DAN

- iii) Telah menghadiri kursus 'Train The Trainer' (TTT) anjuran NIOSH atau program yang setara diiktiraf oleh Pembangunan Sumber Manusia Berhad (PSMB) dengan jayanya DAN
- iv) Boleh berkomunikasi dalam Bahasa Malaysia dan / atau Bahasa Inggeris dengan baik.

Permohonan beserta dokumen boleh dihantar melalui emel ke niosh.trainers@gmail.com sebelum atau pada 31 Ogos

SCAN ME

www.niosh.com.my

SAFETY & HEALTH OFFICER (SHO)

FULL TIME & PART TIME

FULL TIME :
Date : 23 May 2022 - 27 June 2022
Fees : RM3,180.00 (Include SST 6%)
Venue : NIOSH Tawau

FREE 1 DAY SHO EXAMINATION WORKSHOP

PART TIME :
Date : 02 July 2022 - 24 Sept 2022
Fees : RM3,180.00 (Include SST 6%)
Venue : NIOSH Tawau

Contact Us
Azri Abidin
Zumarifah Rika
Abd. Hamid Hassan
Tel: 099-756392
Whatsapp: 0192333079
Email: tawau@niosh.com.my

www.niosh.com.my

KEMENTERIAN SUMBER MANUSIA

NIOSH
National Institute of Occupational Safety and Health

NIOSH EARTH HOUR

HQ- ECRO - SRO

SATURDAY 26-MAR-2022

8.30-9.30 PM

"WE SWITCH OFF ALL ELECTRICAL APPLIANCES AND SUPPLY FOR 1-HOUR. AS A SIGN OF NIOSH IS IN LINE WITH CONSERVING THE NATURE."

Wabak Covid-19 telah memberikan impak yang besar khususnya kepada kelangsungan operasi perniagaan akibat sekatan pergerakan. Pelbagai strategi kawalan penularan di tempat kerja dijalankan sebagai usaha menghidupkan semula aktiviti ekonomi Negara.

Selain daripada mewujudkan jadual pengaliran bekerja, antara langkah kawalan lain yang dipraktikkan adalah pematuhan SOP Covid-19 termasuklah pemakaian pelitup muka, ujian saringan, keperluan kuarantin dan kriteria vaksin dalam memastikan operasi optimum terutamanya kepada industri perkilangan.

Terkini, WHO telah mengesahkan varian Omicron yang boleh tersebar melalui udara (airborne) dengan kadar jangkitan yang tinggi dan seterusnya membantutkan rancangan peralihan ke fasa endemik.

Pakej Perkhidmatan Keselamatan dan Kesihatan Pekerjaan (KKP): Kawalan Risiko Jangkitan Covid-19 (pengudaraan) bagi SME.

Subjungan itu, Kerajaan Malaysia yang menitikberatkan elemen "Keluarga Malaysia" prihatin dengan keadaan ini dan telah menyediakan Pakej Perkhidmatan KKP: Kawalan Risiko Jangkitan Covid-19 Pengudaraan bagi SME.

Tawaran Percuma
Istimewa untuk industri kecil dan sederhana (IKS) bagi 300 syarikat pertama

Laporan Pemantauan IAQ asas dan cadangan penambahbaikan KKP di tempat kerja disediakan

Promosi terbuka kepada SME. 300 slot diberikan secara **PERCUMA !!!**

Untuk maklumat lanjut, emel ke cmc@niosh.com.my

Daftar slot di:




Pendaftaran

▼

Pemeriksaan awal tempat kerja (Workplace Improvement Need Analysis)

▼

Pemantauan IAQ asas - Covid-19

▼

Laporan pemantauan IAQ dan cadangan penambahbaikan KKP di tempat kerja

Proses Program Kawalan Risiko Jangkitan Covid-19 Pengudaraan bagi SME

www.niosh.com.my

Kementerian Sumber Manusia melalui NIOSH mengambil inisiatif di bawah program Aspirasi Keluarga Malaysia (AKM) menawarkan perkhidmatan Penaksiran Asas Kualiti Udara Dalam (KUD) secara PERCUMA kepada syarikat-syarikat di dalam kategori mikro dan kecil.

Inisiatif percuma ini akan melibatkan lebih 300 syarikat mikro dan kecil dimana pemeriksaan awal di tempat kerja akan dijalankan oleh Pakar Teknikal NIOSH. Laporan pemeriksaan awal di tempat kerja dan pemantauan asas KUD akan disediakan dengan cadangan penambahbaikan KUD serta aspek keselamatan dan kesihatan pekerjaan (KKP) di tempat kerja.

Pihak IKS digesa untuk menghubungi pihak NIOSH untuk mendapatkan perkhidmatan penaksiran asas KUD. Sebarang pertanyaan boleh ditujukan kepada NIOSH melalui e-mail rasmi cmc@niosh.com.my.



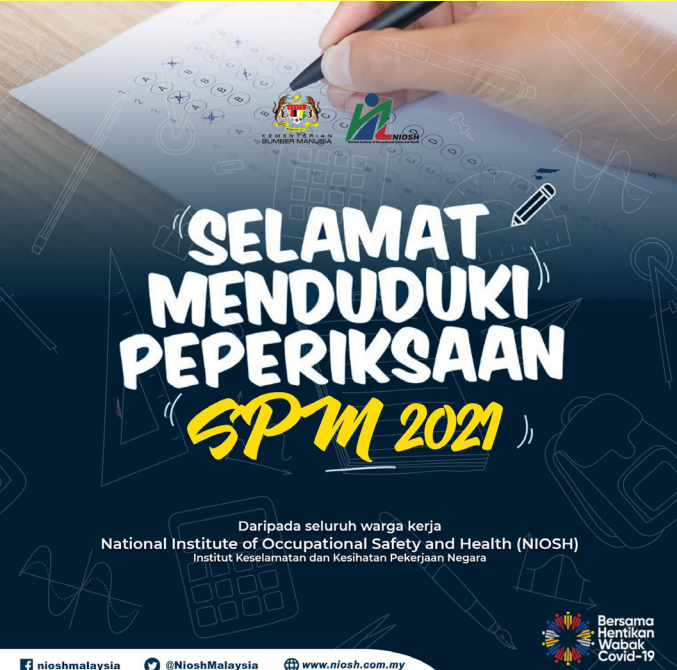
چرامه فردان

CERAMAH PERDANA
(ONLINE ZOOM)

MENUJU IHYA' RAMADAN :
"PERSIAP IMAN, RANCANG AMALAN"

11 MAC 2022 | JUMAAT
09.00 pagi

DISAMPAIKAN OLEH
IMAM MUDA ASYRAF



"SELAMAT MENDUDUKI PEPERIKSAAN SPM 2021"

Daripada seluruh warga kerja
National Institute of Occupational Safety and Health (NIOSH)
Institut Keselamatan dan Kesihatan Pekerjaan Negara

Bersama Hentikan Wabak Covid-19

www.niosh.com.my

2 MARCH

NIOSH Cert Best Service Provider award



NIOSH Certification Sdn Bhd has received the Best Service Provider award from Sarawak Energy Berhad (SEB) during the Sarawak Energy Vendor Awards 2021 (SEVA) ceremony held in Kuching on 2nd Mar 2022.

The SEVA program recognizes top-performing vendors for their exceptional service to SEB and is benchmarked against the best practices of other major industry players in the region.

Thank you Sarawak Energy Berhad for your acknowledgment of our performance in Health, Security, Safety & Environmental Excellence (HSSE), Quality of work, Delivery of services, and Integrity

9 MARCH

Kunjungan delegasi Universiti Pertahanan Nasional Malaysia



9 Mac 2022, Bandar Baru Bangi - Tuan Haji Ayop Salleh, Pengarah Eksekutif NIOSH menerima kunjungan hormat dari delegasi Universiti Pertahanan Nasional Malaysia yang diketuai oleh YBhg Dato' Dr. Junaidah Kamarrudin, Penolong Naib Canselor (Perkhidmatan, Jaringan Industri dan Perhubungan Korporat).

Perbincangan kerjasama strategik antara kedua-dua organisasi antara lain adalah pengisian program 17th Defence Services Asia yang akan berlangsung pada 28-31 Mac 2022.

NIOSH dan UPNM juga bersetuju untuk mengadakan beberapa kolaborasi berkaitan aktiviti latihan dan persijilan bagi manfaat pelajar dan pensyarah UPNM.

15 MAC

COSH 2022



15 Mac 2022, Kuala Lumpur - Institut Keselamatan dan Kesihatan Pekerjaan Negara atau NIOSH akan menganjurkan 23rd Conference and Exhibition on Occupational Safety and Health (COSH 2022) atau Persidangan dan Pameran di dalam Keselamatan dan Kesihatan Pekerjaan Ke-23 (COSH 2022).

COSH 2022 merupakan salah satu aktiviti tahunan anjuran NIOSH bertujuan untuk memperkenalkan dan membincangkan isu terkini dalam bidang keselamatan dan kesihatan yang boleh memanfaatkan seluruh industri dan pekerjaan di Malaysia. Persidangan ini juga merupakan sebuah platform bagi pakar-pakar di dalam bidang Keselamatan dan Kesihatan Pekerjaan (KKP) untuk mengetengah dan membentangkan perkembangan dan teknologi baharu yang sentiasa berubah yang boleh membawa kesan positif di kalangan industri.

COSH 2022 dijadualkan akan berlangsung pada 29 dan 30 Ogos, 2022 dengan tema '*RESILIENCE TOWARDS NEW CHALLENGES*' atau dalam Bahasa Malaysia 'Berdaya Tahan Menghadapi Cabaran Baharu'. Pilihan Tema ini adalah tepat pada masa ini memandangkan negara kita sedang dalam fasa pemulihan dan dalam proses peralihan ke endemik. COSH 2022 akan berlangsung di Kuala Lumpur Convention Centre (KLCC).

NIOSH mensasarkan seramai 1500 orang peserta persidangan yang akan hadir termasuk peserta yang menyertai persidangan secara atas talian. Dijangkakan seramai 80 buah syarikat akan terlibat dalam pameran yang akan diadakan. Persidangan selama 2 hari ini akan menampilkan 18 orang pembentang dari dalam dan luar negara.

Senator Datuk T. Mohan, Naib Pengerusi NIOSH, YBrs. Tuan Haji Ayop Salleh, Pengarah Eksekutif NIOSH, Ahli Lembaga Pengarah NIOSH, Ketua dan wakil Ketua-Ketua Jabatan dan agensi Kementerian Sumber Manusia, rakan industri, pengamal KKP, syarikat-syarikat penyedia perkhidmatan KKP dan wakil media.

29 MAC

UPNM MOU SIGNING



29 Mac 2022, Kuala Lumpur - Bertempat di MITEC, Kuala Lumpur, NIOSH dan UPNM mengadakan majlis menandatangani Memorandum Persefahaman (MOU) bagi kerjasama strategik di dalam aktiviti pendidikan, penyelidikan dan program kesedaran.

Majlis MOU ini diadakan bersempena dengan 17th Defence Services Asia dan 2nd International Exhibition on National Security for Asia (NATSEC Asia 2022).

Pihak UPNM diwakili oleh YBhg. Lt. Jen. Dato' Hasagaya bin Abdullah dan NIOSH diwakili oleh YBrs. En. Khairunnizam Mustapa, Pengurus Besar Jabatan Perundingan, Penyelidikan dan Pembangunan NIOSH (CRD).



MOHD SU BIN MUHAMMAD
OSH TRAINER /
CONSULTANT (CRANE OPERATION)

LENSA KOMPETENSI

Topic :
**CRANE OPERATION : TRAINED
AND COMPETENT PERSONNEL**

ATTENDANCE CERTIFICATE PROVIDED
(FOR REGISTERED PARTICIPANTS ONLY)

Wednesday | 09 Mac 2022 | 10.00 am

Platform :



LIVE nioshmalaysia

FOR MORE INFO

019-231 6608 (Sekretariat)

REGISTER <https://edafatar.niosh.net.my/>

09 MAC

**1 LENSA
KOMPETENSI**

**2 ONLINE
SEMINAR**

16 MAC

Organised by:

**SEMINAR
THERMAL HAZARD (FIRE & ELECTRIC ARC)
HAZARD ASSESSMENT
AND PROTECTION**

FREE FIRST COME FIRST SERVE
GET CEP : 5 POINTS

0830 hrs - 1700 hrs
16.3.2022 (Wednesday)
SEMARANG, JOHOR
NIOSH WILAYAH SELATAN JOHOR BAHRU

Register Now at:
edafatar.niosh.net.my

Sponsored by: Supported by:

05 MAC

**Online Seminar
FIRE EMERGENCY
AWARENESS
HOW TO ACT SAFELY?**

YURAN :
RM53
(Termasuk 6% SST)

TARIKH : 05 MAC 2022 (SABTU)
MASA : 9 PAGI - 12 T/HARI

* Seminar ini TIDAK MENYEDIAKAN mata kredit CEP

- Seminar online di Aplikasi Zoom Meeting
- Terbuka hanya kepada PESERTA yang telah membuat bayaran sahaja
- SIJIL PENYERTAAN disediakan

Untuk mendaftar :
<https://edafatar.niosh.net.my>

Untuk maklumat lanjut, sila hubungi:
WhatsApp : 019-2316608 (Sekretariat)
Email : dl.fscd@niosh.com.my

MOHD NASIR BIN CHE YAHAYA
-FIRE WATCHER SAFETY-
-EMERGENCY PREPAREDNESS & RESPONSE PLAN-
(COMPETENT / CERTIFIED TRAINER)

31 MAC

**Online Seminar
HIRARC AND JSA
PERFORMING EFFECTIVE
RISK ASSESSMENT
AT WORKPLACE**

YURAN :
RM53
(Termasuk 6% SST)

TARIKH : 31 MAC 2022 (KHAMIS)
MASA : 9 PAGI - 12 T/HARI

* Seminar ini TIDAK MENYEDIAKAN mata kredit CEP

- Seminar online di Aplikasi Zoom Meeting
- Terbuka hanya kepada PESERTA yang telah membuat bayaran sahaja
- SIJIL PENYERTAAN disediakan

Untuk mendaftar :
<https://edafatar.niosh.net.my>

Untuk maklumat lanjut, sila hubungi:
WhatsApp : 019-2316608 (Sekretariat)
Email : dl.fscd@niosh.com.my

MOHD FADZIL B. AHMAD
- SAFETY AND HEALTH OFFICER (SHO) COURSE -
(COMPETENT / CERTIFIED TRAINER & SPEAKER)

OSHTALK Sharing Session

Topik :
Pemeriksaan Perundangan KKP ditempat kerja melalui peranan Jawatankuasa Keselamatan dan Kesihatan Pekerja

Khamis | 03/03/2022 | 11.00am - 12.00pm

EN. IDRIS ABDUL RAHMAN
TIMBALAN PENGARAH (KHIDMAT TEKNIK) Jabatan Keselamatan dan Kesihatan Pekerjaan (JKKP), Selangor

LIVE nioshmalaysia

03 MAC

10 MAC

OSHTALK Sharing Session

Topik :
Managing your OSH Careers with NIOSH Training : OHD & OHN

Thursday | 10/03/2022 | 11.00am - 12.00pm

DEWILILAH SAPRIAH YOSOF
TECHNICAL EXPERT CONSULTATION, RESEARCH AND DEVELOPMENT DEPARTMENT (CRDD), NIOSH

LIVE nioshmalaysia

3 OSHTALK

24 MAC

OSHTALK Sharing Session

Topik :
Manual Handling Assisitive Device : What to Use and when to Use

Khamis | 24/03/2022 | 11.00am - 12.00pm

EN. ISMAIL ABDUL RAHMAN
EXECUTIVE / TECHNICAL OFFICER OF ENVIRONMENTAL Ergonomics Laboratory, Ergonomics Excellence Centre, NIOSH

LIVE nioshmalaysia

10 sekolah diarah tutup tiga hari

Keputusan dibuat susulan indeks udara pada tahap kepekatan bolehancam nyawa

KUALA LUMPUR, 16 Januari 2022 (Bernama) - Keseluruhan 10 sekolah diarah ditutup selama tiga hari susulan Indeks Udara (IU) pada tahap kepekatan bolehancam nyawa.



Sesungguhnya 10 sekolah diarah ditutup selama tiga hari susulan Indeks Udara (IU) pada tahap kepekatan bolehancam nyawa.

Keputusan itu dibuat susulan Indeks Udara (IU) pada tahap kepekatan bolehancam nyawa. Keputusan itu dibuat susulan Indeks Udara (IU) pada tahap kepekatan bolehancam nyawa.

Garis panduan ketat kawal kualiti pembinaan

Diah Prof Madya Ruslan Afendy dan Dr Shehikh Ali Azzan Ali

Pembinaan semakin pesat dan arus teknologi terkini, memacu industri pembinaan dalam merancang bangunan bertingkat dan dikenali dengan lebih kompleks serta jimat masa.

tidak berkualiti termasuk pengurusan projek yang lemah, peranan subkontraktor yang rumit, kurang kemahiran dan pengalaman dalam kalangan buruh, kekurangan komunikasi, keadaan cuaca tidak menentu, penggunaan alat pembinaan tidak sesuai serta kos terbalak.

binan, namun ia masih tidak mendapat sambutan menterbangkan. Puncanya, kerana kebanyakan kontraktor mahu mengurangkan kos pembinaan, seterusnya menjejaskan mutu kerja yang berkualiti.

Antara punca menyebabkan sesuatu mutu kerja

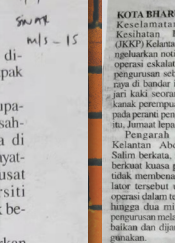
Penyusunan tenaga kerja mahir perlu diberi perhatian bagi memastikan kualiti dibina selamat.

(Foto hiasan)

Pengawal keselamatan maut dihempap batang besi

KUALA LUMPUR - Seorang pengawal keselamatan maut dihempap sebatang pengumpul paip besi ketika sedang membuat rondaan di laluan keluar parkir Bangsar Trade Center, Bangsar Tengah.

Jabatan Keselamatan dan Kesihatan Pekerjaan (JKKP) Wilayah Persekutuan Kuala Lumpur dan Putrajaya, dalam satu kenyataan berkata, kejadian jam 10.40 pagi itu berlaku ketika kerja pembinaan



Abdul Aziz

Abdul Aziz, 42, maut dihempap sebatang pengumpul paip besi ketika sedang membuat rondaan di laluan keluar parkir Bangsar Trade Center, Bangsar Tengah.

JKKP keluar notis larangan operasi

KOTA BHARI - Jabatan Keselamatan dan Kesihatan Pekerjaan (JKKP) Kelantan telah mengeluarkan notis larangan operasi eskalator kepada pengurusan sebuah pusat rivo di bandar ini selepas juri kakitangan kanak-kanak pertengahan terkejut pada penutup pengangkutan itu, Jumat lepas.

"JKKP Kelantan juga telah menyalah pengurusan premis, firma yang kompeten (PKY) dan Pesanan Pengurusan Kompleks Malaysia (PPK Malaysia) untuk tidak lanjut.

KERJA JADI PUNCA?

TEKANAN KERJA JADI PUNCA? Tekanan kerja jadi punca? Tekanan kerja jadi punca? Tekanan kerja jadi punca?



Pengarah Jabatan Keselamatan dan Kesihatan Pekerjaan WP Kuala Lumpur dan Putrajaya, Ir. Zamzurin Maarof (di kiri) meninjau lokasi laluan dan pengawal keselamatan maut dihempap batang besi.

Dua treler terbakar selepas nahas

Treler muatan kertas secara serentak belahang terbucah dan terbakar selepas berlaku kemalangan dua treler yang bertembung di lorong kecemasan.

Dua treler muatan kertas secara serentak belahang terbucah dan terbakar selepas berlaku kemalangan dua treler yang bertembung di lorong kecemasan.

Kejuruteraan dan pemantauan keselamatan kecederaan di bahagian muatan komposit

KERJA JADI PUNCA?

TEKANAN KERJA JADI PUNCA? Tekanan kerja jadi punca? Tekanan kerja jadi punca? Tekanan kerja jadi punca?

2 syarikat didenda abai keselamatan pekerja

Iph: Dua syarikat masing-masing didenda RM5,000 dan RM35,000 oleh Mahkamah Sesyen di sini semalam, kerana mengabaikan keselamatan hingga menyebabkan pekerja maut.

Di mahkamah sama, kilang pemrosesan gajuk MARDEC Processing Sdn Bhd yang diwakili Pengarah Pegawai Kawangan, Mohd Hidayatullah Mohamed Yusof, 43, didenda maksimum RM50,000 selepas didenda RM35,000 mengikut Seksyen 15(1) Akta Keselamatan dan Kesihatan Pekerjaan 1994.

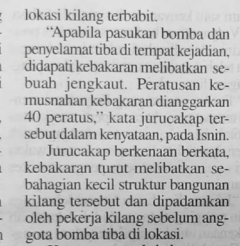
Kemalangan berlaku ketika mangsa menjalankan kerja memasing perambak, tergantung dan terjatuh bersama drapour tu ke lantai jeti dan kemudian ke

Perkerja kilang meleur, jengkaut dipandu terbakar

PERAI - Seorang pekerja kilang meleur selepas jengkaut dipandu terbakar dalam kejadian di sebuah kilang di Kawasan Perusahaan Bebas Perai di sini pada pagi Isnin.

Dalam kejadian jam 11 pagi, Muhammad Hafiz Sulaiman, 29, meleur pada badan dan dikejarkan ke Hospital Seberang Jaya untuk menerima rawatan.

Jurucakap Balai Bomba dan Penyelamat Perai berkata, pihaknya menerima laporan kejadian kira-kira jam 11.07 pagi sebelum sepasukan anggota bergegas ke lokasi kilang terbakar.



Jengkaut yang dipandu mangsa terbakar menyebabkan dia meleur.



Jengkaut yang dipandu mangsa terbakar menyebabkan dia meleur.

2 companies fined for failing to ensure workers' safety

IPoh: Two companies were fined RM50,000 and RM35,000 respectively by the Sessions Court here yesterday for neglecting safety aspects which resulted in the deaths of their workers.

Perak Department of Occupational Safety and Health (JKKP) prosecution officers Devicyly Yusof and Mohd Hidayatullah Mohamed Yusof, 43, were fined a maximum RM50,000 after being found guilty under Section 15(1) of the Occupational Safety and Health Act 1994.

Perkerja kilang meleur, jengkaut dipandu terbakar. Perkerja kilang meleur, jengkaut dipandu terbakar.

Tanggungjawab bersama wujud persekitaran selamat di tempat kerja

Uthi Mohd Rafiqi Rahmat dan Dr. Nur Hafizah Yusoff. Tanggungjawab bersama wujud persekitaran selamat di tempat kerja.

Persekitaran selamat di tempat kerja memerlukan kerjasama semua pihak. Tanggungjawab bersama wujud persekitaran selamat di tempat kerja.

Disclaimer

Copyright 2022. National Institute of Occupational Safety and Health Malaysia. All right reserved. No part of this publication can be reproduced, stored in retrieval system, or transcribed in any forms or by any means, electronic, photocopying, or otherwise, without the prior written permission of the copyright owner.

NATIONAL INSTITUTE OF OCCUPATIONAL SAFETY AND HEALTH MALAYSIA (NIOSH) Institut Keselamatan dan Kesihatan Pekerjaan Negara (243042-U) Kementerian Sumber Manusia Lot 1, Jalan 15/1, Seksyen 15, 43650 Bandar Baru Bangi, Selangor Darul Ehsan Tel: 03-8769 2100 Fax: 03-8926 5655 www.niosh.com.my

